



PUBLIC SUMMARY REPORT

TRACEABILITY TO PLANTATION ASSESSMENT

Name of Parent Company: Kian Hoe Plantations Berhad

Name of Palm Oil Mill: Coronation Palm Oil Mill

Mill MPOB License No.: 500057504000

Mill Address: Batu 3, Jalan Batu Pahat, P.O. Box 504, 86000 Kluang

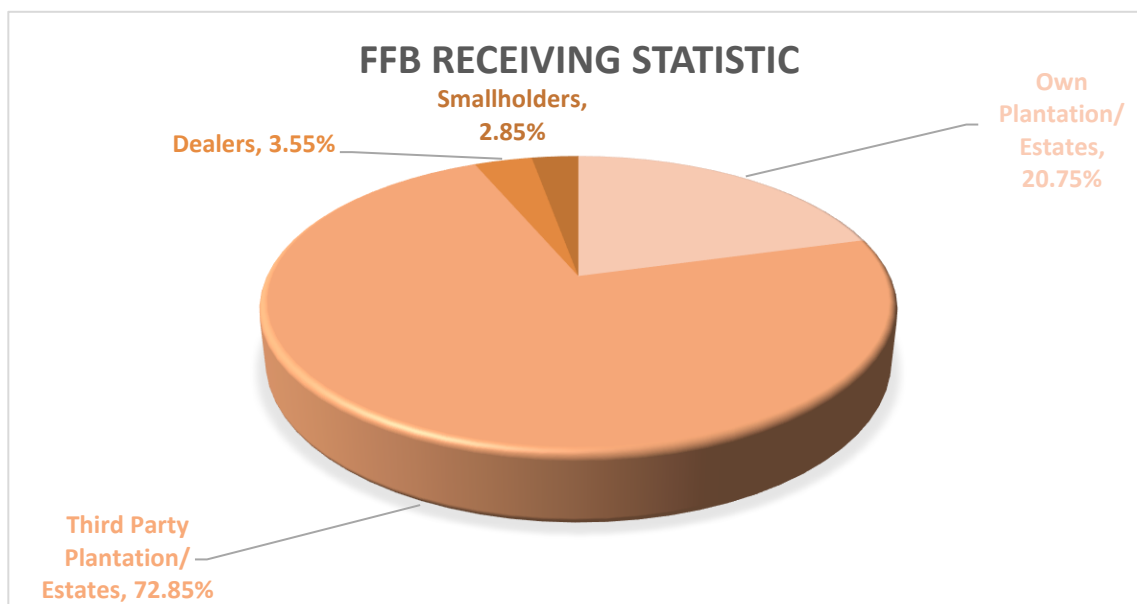
GPS Coordinate of Palm Oil Mill: 2.02299, 103.06461

Supplied Mewah's Refineries: Mewaholeo Industries Sdn Bhd

(Pasir Gudang)

Assessment Date: 15th January 2025 (Wednesday)

A. Fresh Fruit Bunch (FFB) Traceability:



FFB Sources	TTP Score	Overall TTP Score %
Own Plantations/ Estates	100%	100%
3 rd Party Plantations/ Estates	100%	
Dealers	100%	
Smallholders	100%	

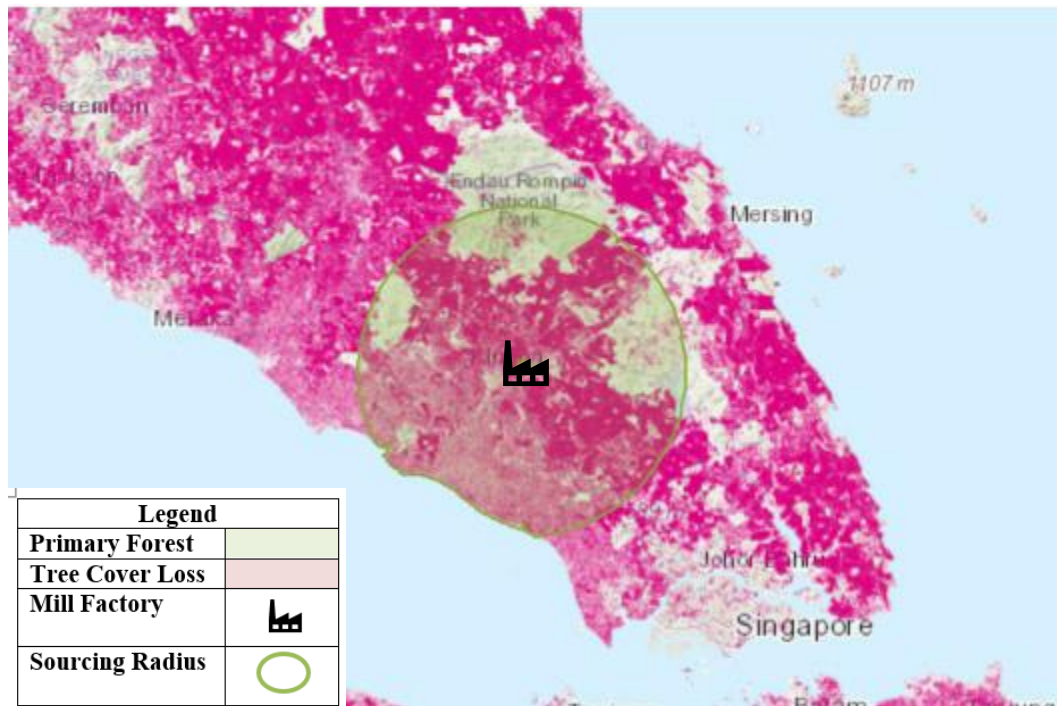
B. Environmental Risk Analysis

Assessment Date: 15th January 2025

1. Environmental risk assessment is carried out within theoretical FFB catchment area (50km radius) in Coronation Palm Oil Mill.
2. The overall environmental risk ranking of Coronation Palm Oil Mill is summarized as follows.

Summary	Mill Priority (Threat + Value)		Threat (Overall)		Value (Overall)																															
	Low		Low		Low																															
Forest change	<div><div></div><div>LOSS, ALL YEARS (HA)</div><div>TREE COVER EXTENT 2000 (HA)</div></div>																																			
	Tree Cover Loss	47.99%	<div></div>	308,529	642,923																															
	Primary Forest	7.10%	<div></div>	10,841	152,704																															
	Protected Areas	7.10%	<div></div>	7,057	99,339																															
	Peat	37.37%	<div></div>	46,735	125,068																															
	Intact Forest Landscape	0.00%	<div></div>	0	0																															
Commodity Risk	<div>PALM RISK ANALYSIS</div> <div><table><thead><tr><th colspan="4">Threats</th><th colspan="3">Values</th></tr><tr><th>Deforestation</th><th>Peat</th><th>Protected Areas</th><th>Fires</th><th>Forest</th><th>Peat</th><th>Protected Areas</th></tr></thead><tbody><tr><td>Amount</td><td>776ha</td><td>136,425ha</td><td>6,678ha</td><td>80 /yr</td><td>143,621ha</td><td>149,727ha</td><td>100,762ha</td></tr><tr><td>Risk Level</td><td>Low</td><td>High</td><td>High</td><td>Medium</td><td>Medium</td><td>Medium</td><td>High</td></tr></tbody></table></div>						Threats				Values			Deforestation	Peat	Protected Areas	Fires	Forest	Peat	Protected Areas	Amount	776ha	136,425ha	6,678ha	80 /yr	143,621ha	149,727ha	100,762ha	Risk Level	Low	High	High	Medium	Medium	Medium	High
	Threats				Values																															
Deforestation	Peat	Protected Areas	Fires	Forest	Peat	Protected Areas																														
Amount	776ha	136,425ha	6,678ha	80 /yr	143,621ha	149,727ha	100,762ha																													
Risk Level	Low	High	High	Medium	Medium	Medium	High																													
Mill Priority Threat Value	<div>MILL PRIORITY SUMMARY</div> <div><table><thead><tr><th>CORONATION</th><th>High</th><th>High</th><th>Medium</th></tr><tr><th>Mill Name</th><th>Mill Priority Threat + Value</th><th>Threat Overall</th><th>Value Overall</th></tr></thead></table><div>MILL PRIORITY HISTORYTHREAT + VALUE</div><div><div>High</div><div>Medium</div><div>Low</div></div><div><div>2002</div><div>'03</div><div>'04</div><div>'05</div><div>'06</div><div>'07</div><div>'08</div><div>'09</div><div>'10</div><div>'11</div><div>'12</div><div>'13</div><div>'14</div><div>'15</div><div>'16</div><div>'17</div><div>'18</div><div>'19</div><div>'20</div><div>'21</div><div>'22</div></div></div>						CORONATION	High	High	Medium	Mill Name	Mill Priority Threat + Value	Threat Overall	Value Overall																						
	CORONATION	High	High	Medium																																
Mill Name	Mill Priority Threat + Value	Threat Overall	Value Overall																																	

The following mapping is used as an indicator to indicate the potential environmental risks of the assessed palm oil mill.



C. Social Impact Assessment

1. Social Impact Assessment is carried out as well during the mill assessment.
2. The representatives from the mill were made to understand the important pillars of good social responsibility practices, mandatory compliance of national labour laws & human rights, and the need to improve social engagement with the local community.
3. The findings of the social impact assessment are outlines in the following table:

No.	Social Impact Assessment Criteria	Conclusion
1.	Compliance of National laws & Regulations	Yes
2.	Availability of Labour Policy	Yes
3.	Implementing Measures to Ensure the Elimination of Child and Forced Labor	Yes
4.	Availability of clearly written and understandable worker's contract for foreign guest workers	Yes
5.	Freedom of Association	Yes
6.	No exploitation of human rights of workers and local communities	Yes
7.	Safe & Healthy Working Environment	Yes
8.	Compliance with worker's minimum standard of Housing & Amenities Act 1990	Yes
9.	Availability of Complaint Platform & Grievance Mechanism	Yes
10.	CSR/Community Contribution	Yes
11.	Fair Pricing	Yes

Disclaimers:

The traceability to plantation assessment is carried out through observation, documentation reviews and interview based on Mewah's Sustainable Palm Oil Policy and Mewah's Supplier Assessment Guidelines. The above findings are collected through multiple sampling methodologies during the assessment date. The information contained in this report may contain confidential, proprietary, privileged and/or private information. It is only intended for the users of Mewah Group Sustainability Dashboard.