



**PUBLIC SUMMARY REPORT**  
**TRACEABILITY TO PLANTATION ASSESSMENT**

**Name of Parent Company:** Felcra Berhad

**Name of Palm Oil Mill:** Kilang Sawit Felcra Berhad Maran

**Mill MPOB License No.:** 500246204000

**Mill Address:** Pekan Tajau, Jalan Maran, 26500 Maran, Pahang Darul Makmur

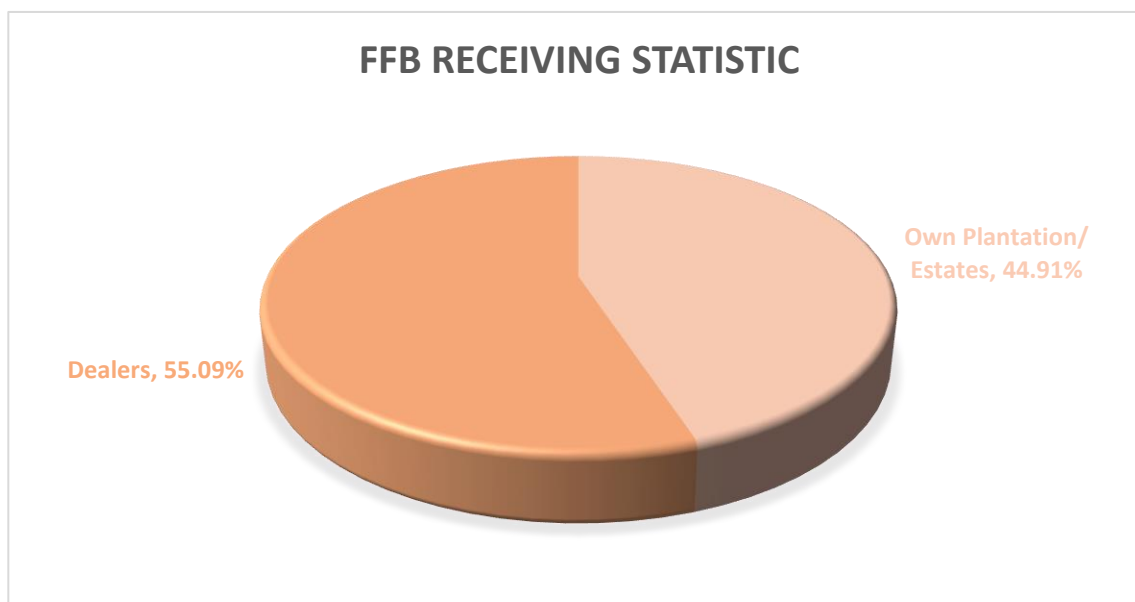
**GPS Coordinate of Palm Oil Mill:** 3.5716667, 102.686111

**Supplied Mewah's Refineries:** Mewah-Oils Sdn Bhd (Port Klang),

Ngo Chew Hong Oils & Fats (M) Sdn Bhd (Semenyih)

**Assessment Date:** 22<sup>nd</sup> August 2024 (Thursday)

**A. Fresh Fruit Bunch (FFB) Traceability:**



FFB Sources	TTP Score	Overall TTP Score %
Own Plantations/ Estates	100%	100%
3 <sup>rd</sup> Party Plantations/ Estates	NA	
Dealers	100%	
Smallholders	NA	

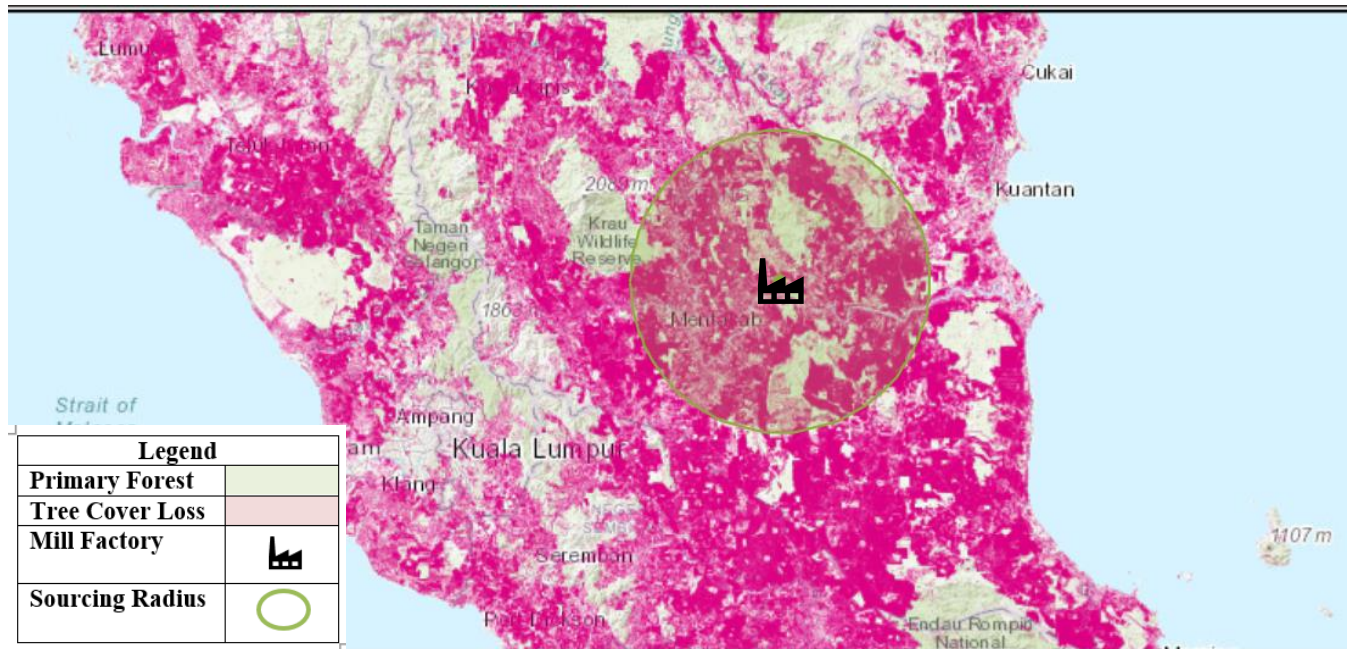
## B. Environmental Risk Analysis

Assessment Date: 22<sup>nd</sup> August 2024

1. Environmental risk assessment is carried out within theoretical FFB catchment area (50km radius) in Kilang Sawit Felcra Berhad Maran.
2. The overall environmental risk ranking of Kilang Sawit Felcra Berhad Maran is summarized as follows.

Summary	Mill Priority (Threat + Value)		Threat (Overall)		Value (Overall)	
	Low		Low		Low	
Forest change					LOSS, ALL YEARS (HA)	TREE COVER EXTENT 2000 (HA)
	Tree Cover Loss	53.47%			368,500	689,221
	Primary Forest	100.00%			76,215	0
	Protected Areas	40.16%			31,476	78,382
	Peat	52.40%			13,050	24,903
	Intact Forest Landscape	0.03%			1.00	3,925
	Commodity Risk	PALM RISK ANALYSIS				
Mill Priority Threat Value	MILL PRIORITY SUMMARY					

The following mapping is used as an indicator to indicate the potential environmental risks of the assessed palm oil mill.



### C. Social Impact Assessment

1. Social Impact Assessment is carried out as well during the mill assessment.
2. The representatives from the mill were made to understand the important pillars of good social responsibility practices, mandatory compliance of national labour laws & human rights, and the need to improve social engagement with the local community.
3. The findings of the social impact assessment are outlines in the following table:

No.	Social Impact Assessment Criteria	Conclusion
1.	Compliance of National laws & Regulations	<b>Yes</b>
2.	Availability of Labour Policy	<b>Yes</b>
3.	Implementing Measures to Ensure the Elimination of Child and Forced Labor	<b>Yes</b>
4.	Availability of clearly written and understandable worker's contract for foreign guest workers	<b>Yes</b>
5.	Freedom of Association	<b>Yes</b>
6.	No exploitation of human rights of workers and local communities	<b>Yes</b>
7.	Safe & Healthy Working Environment	<b>Yes</b>
8.	Compliance with worker's minimum standard of Housing & Amenities Act 1990	<b>Yes</b>
9.	Availability of Complaint Platform & Grievance Mechanism	<b>Yes</b>
10.	CSR/Community Contribution	<b>Yes</b>
11.	Fair Pricing	<b>Yes</b>

#### *Disclaimers:*

*The traceability to plantation assessment is carried out through observation, documentation reviews and interview based on Mewah's Sustainable Palm Oil Policy and Mewah's Supplier Assessment Guidelines. The above findings are collected through multiple sampling methodologies during the assessment date. The information contained in this report may contain confidential, proprietary, privileged and/or private information. It is only intended for the users of Mewah Group Sustainability Dashboard.*