



PUBLIC SUMMARY REPORT

TRACEABILITY TO PLANTATION ASSESSMENT

Name of Parent Company: Havys Oil Mill Sdn Bhd

Name of Palm Oil Mill: Havys Oil Mill Sdn Bhd

Mill MPOB License No.: 500379504000

Mill Address: KM 31, Jalan Bahau Keratong, Mukim Bera, Pahang

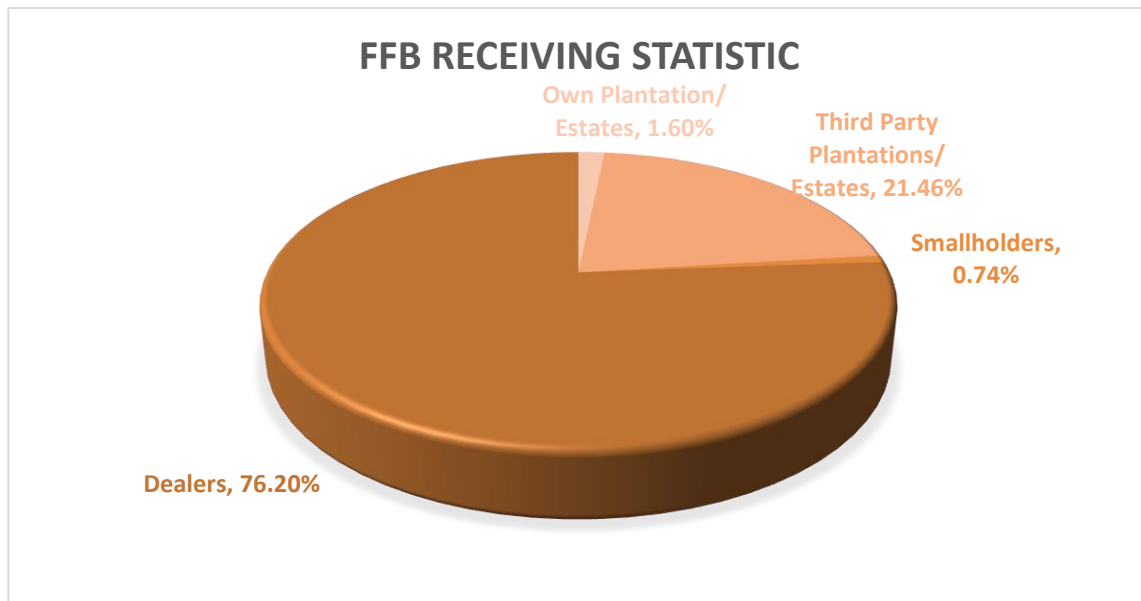
GPS Coordinate of Palm Oil Mill: 2.89205, 102.661787

Supplied Mewah's Refineries: Mewah-Oils Sdn Bhd (Port Klang),

Ngo Chew Hong Oils & Fats (M) Sdn Bhd (Semenyih)

Assessment Date: 21st August 2024 (Wednesday)

A. Fresh Fruit Bunch (FFB) Traceability:



FFB Sources	TTP Score	Overall TTP Score %
Own Plantations/ Estates	100%	100%
3 rd Party Plantations/ Estates	100%	
Dealers	100%	
Smallholders	100%	

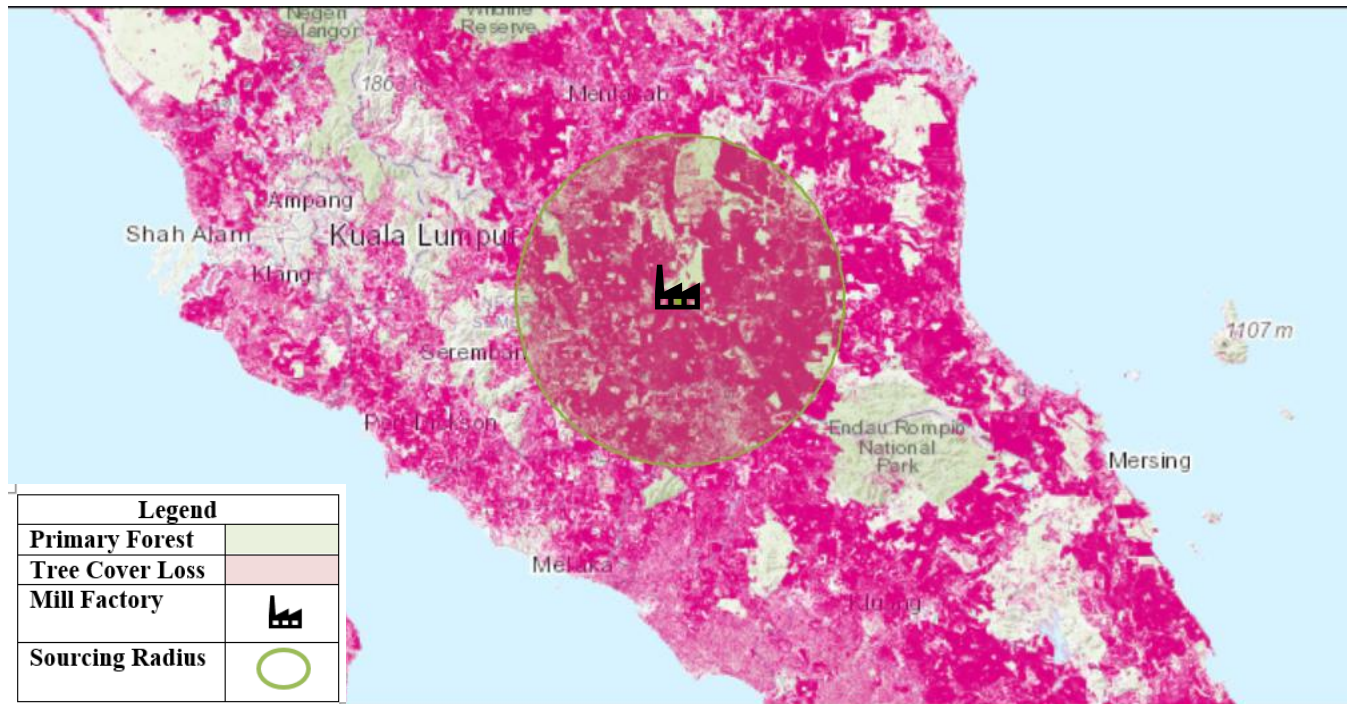
B. Environmental Risk Analysis

Assessment Date: 21st August 2024

1. Environmental risk assessment is carried out within theoretical FFB catchment area (50km radius) in Havys Oil Palm Oil Mill.
2. The overall environmental risk ranking of Havys Oil Palm Oil Mill is summarized as follows.

Summary	Mill Priority (Threat + Value)			Threat (Overall)			Value (Overall)																																
	Low			Low			Low																																
Forest change							LOSS, ALL YEARS (HA)	TREE COVER EXTENT 2000 (HA)																															
	Tree Cover Loss	69.27%				474,132	684,439																																
	Primary Forest	100.00%				47,344	0																																
	Protected Areas	38.59%				30,927	80,151																																
	Peat	58.73%				7,902	13,456																																
	Intact Forest Landscape	0.00%				0	0																																
Commodity Risk	PALM RISK ANALYSIS																																						
	<table><tr><th colspan="4">Threats</th><th colspan="4">Values</th></tr><tr><th></th><th>Deforestation</th><th>Peat</th><th>Protected Areas</th><th>Fires</th><th>Forest</th><th>Peat</th><th>Protected Areas</th></tr><tr><td>Amount</td><td>3,503ha</td><td>12,477ha</td><td>26,316ha</td><td>43/yr</td><td>81,209ha</td><td>15,935ha</td><td>81,535ha</td></tr><tr><td>Risk Level</td><td>Medium</td><td>Low</td><td>High</td><td>Medium</td><td>Low</td><td>Low</td><td>Medium</td></tr></table>								Threats				Values					Deforestation	Peat	Protected Areas	Fires	Forest	Peat	Protected Areas	Amount	3,503ha	12,477ha	26,316ha	43/yr	81,209ha	15,935ha	81,535ha	Risk Level	Medium	Low	High	Medium	Low	Low
Threats				Values																																			
	Deforestation	Peat	Protected Areas	Fires	Forest	Peat	Protected Areas																																
Amount	3,503ha	12,477ha	26,316ha	43/yr	81,209ha	15,935ha	81,535ha																																
Risk Level	Medium	Low	High	Medium	Low	Low	Medium																																
Mill Priority Threat Value	MILL PRIORITY SUMMARY																																						
	<table><tr><th colspan="2">HAVYS</th><th colspan="2">Low</th><th colspan="2">Low</th><th colspan="2">Low</th></tr><tr><th>Mill Name</th><th colspan="3">Mill Priority Threat + Value</th><th colspan="2">Threat Overall</th><th colspan="2">Value Overall</th></tr></table> <div>MILL PRIORITY HISTORYTHREAT + VALUE</div> <div>High</div> <div>Medium</div> <div>Low</div> <div>2002'03'04'05'06'07'08'09'10'11'12'13'14'15'16'17'18'19'20'21'22</div>								HAVYS		Low		Low		Low		Mill Name	Mill Priority Threat + Value			Threat Overall		Value Overall																
HAVYS		Low		Low		Low																																	
Mill Name	Mill Priority Threat + Value			Threat Overall		Value Overall																																	

The following mapping is used as an indicator to indicate the potential environmental risks of the assessed palm oil mill.



C. Social Impact Assessment

1. Social Impact Assessment is carried out as well during the mill assessment.
2. The representatives from the mill were made to understand the important pillars of good social responsibility practices, mandatory compliance of national labour laws & human rights, and the need to improve social engagement with the local community.
3. The findings of the social impact assessment are outlines in the following table:

No.	Social Impact Assessment Criteria	Conclusion
1.	Compliance of National laws & Regulations	Yes
2.	Availability of Labour Policy	Yes
3.	Implementing Measures to Ensure the Elimination of Child and Forced Labor	Yes
4.	Availability of clearly written and understandable worker's contract for foreign guest workers	Yes
5.	Freedom of Association	Yes
6.	No exploitation of human rights of workers and local communities	Yes
7.	Safe & Healthy Working Environment	Yes
8.	Compliance with worker's minimum standard of Housing & Amenities Act 1990	Yes
9.	Availability of Complaint Platform & Grievance Mechanism	Yes
10.	CSR/Community Contribution	Yes
11.	Fair Pricing	Yes

Disclaimers:

The traceability to plantation assessment is carried out through observation, documentation reviews and interview based on Mewah's Sustainable Palm Oil Policy and Mewah's Supplier Assessment Guidelines. The above findings are collected through multiple sampling methodologies during the assessment date. The information contained in this report may contain confidential, proprietary, privileged and/or private information. It is only intended for the users of Mewah Group Sustainability Dashboard.