



## PUBLIC SUMMARY REPORT

### TRACEABILITY TO PLANTATION ASSESSMENT

**Name of Parent Company:** Jeng Huat (Bahau) Realty Sdn Bhd

**Name of Palm Oil Mill:** Kilang Kelapa Sawit Jeng Huat

**Mill MPOB License No.:** 500291804000

**Mill Address:** P.O Box 32, Kilang Kelapa Sawit Jeng Huat

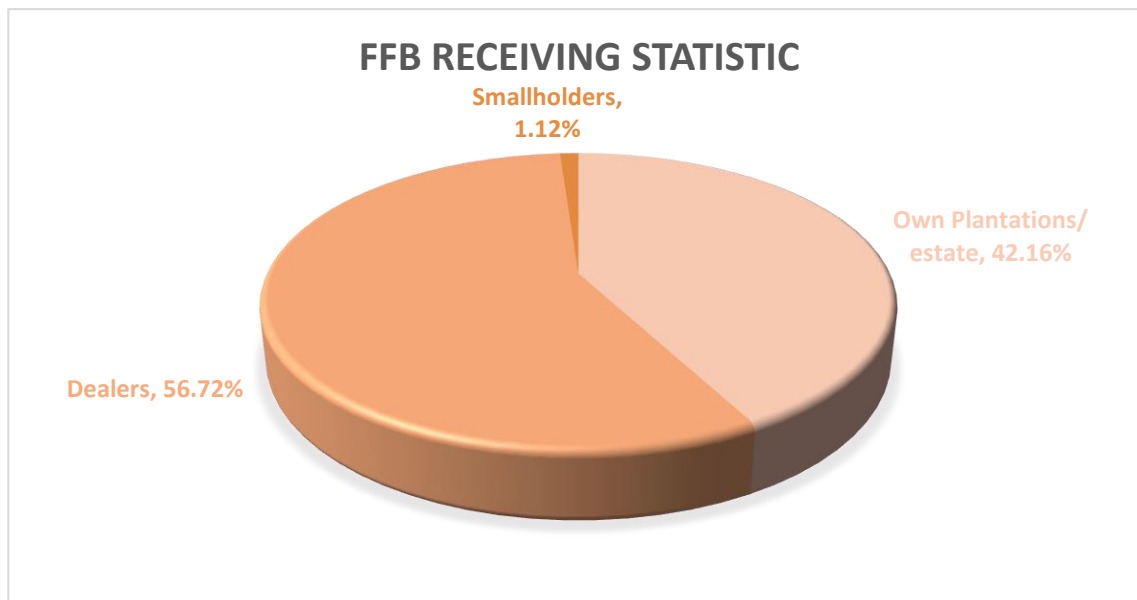
**GPS Coordinate of Palm Oil Mill:** 3.1053, 102.4575

**Supplied Mewah's Refineries:** Mewah-Oils Sdn Bhd (Port Klang),

Ngo Chew Hong Oils & Fats (M) Sdn Bhd (Semenyih)

**Assessment Date:** 10<sup>th</sup> July 2024 (Wednesday)

#### A. Fresh Fruit Bunch (FFB) Traceability:



| FFB Sources                                   | TTP Score | Overall TTP Score % |
|---|-----------|---------------------|
| Own Plantations/<br>Estates                   | 100%      | 100%                |
| 3 <sup>rd</sup> Party Plantations/<br>Estates | NA        |                     |
| Dealers                                       | 100%      |                     |
| Smallholders                                  | 100%      |                     |

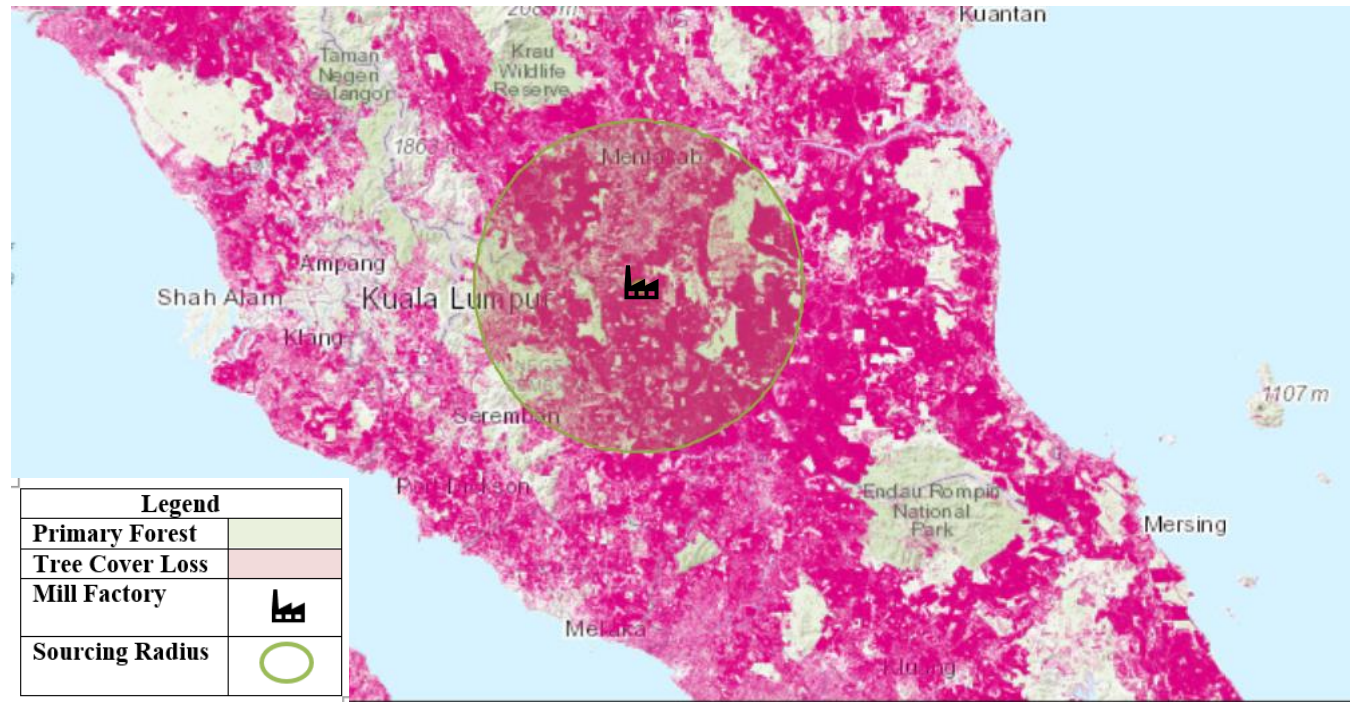
## B. Environmental Risk Analysis

Assessment Date: 10<sup>th</sup> July 2024

1. Environmental risk assessment is carried out within theoretical FFB catchment area (50km radius) in Kilang Kelapa Sawit Jeng Huat.
2. The overall environmental risk ranking of Kilang Kelapa Sawit Jeng Huat is summarized as follows.

| Summary                    | Mill Priority<br>(Threat + Value)   |                      | Threat (Overall) |  | Value (Overall)      |                             |
|----------------------------|-------------------------------------|----------------------|------------------|--|----------------------|-----------------------------|
|                            | Low                                 |                      | Low              |  | Low                  |                             |
| Forest change              |                                     |                      |                  |  | LOSS, ALL YEARS (HA) | TREE COVER EXTENT 2000 (HA) |
|                            | Tree Cover Loss                     | 59.54%               |                  |  | 410,332              | 689,117                     |
|                            | Primary Forest                      | 100.00%              |                  |  | 42,303               | 0                           |
|                            | Protected Areas                     | 28.31%               |                  |  | 27,042               | 95,505                      |
|                            | Peat                                | 55.62%               |                  |  | 11,205               | 20,146                      |
|                            | Intact Forest Landscape             | 0.00%                |                  |  | 0                    | 0                           |
|                            | Commodity Risk                      | PALM RISK ANALYSIS ⓘ |                  |  |                      |                             |
|                            |                                     |                      |                  |  |                      |                             |
|                            |                                     |                      |                  |  |                      |                             |
| Mill Priority Threat Value | MILL PRIORITY HISTORYTHREAT + VALUE |                      |                  |  |                      |                             |
|                            |                                     |                      |                  |  |                      |                             |
|                            |                                     |                      |                  |  |                      |                             |
|                            |                                     |                      |                  |  |                      |                             |
|                            |                                     |                      |                  |  |                      |                             |
|                            |                                     |                      |                  |  |                      |                             |
|                            |                                     |                      |                  |  |                      |                             |

The following mapping is used as an indicator to indicate the potential environmental risks of the assessed palm oil mill.



### C. Social Impact Assessment

1. Social Impact Assessment is carried out as well during the mill assessment.
2. The representatives from the mill were made to understand the important pillars of good social responsibility practices, mandatory compliance of national labour laws & human rights, and the need to improve social engagement with the local community.
3. The findings of the social impact assessment are outlines in the following table:

| No. | Social Impact Assessment Criteria  | Conclusion |
|-----|--|------------|
| 1.  | Compliance of National laws & Regulations  | <b>Yes</b> |
| 2.  | Availability of Labour Policy  | <b>Yes</b> |
| 3.  | Implementing Measures to Ensure the Elimination of Child and Forced Labor                      | <b>Yes</b> |
| 4.  | Availability of clearly written and understandable worker's contract for foreign guest workers | <b>Yes</b> |
| 5.  | Freedom of Association   | <b>Yes</b> |
| 6.  | No exploitation of human rights of workers and local communities                               | <b>Yes</b> |
| 7.  | Safe & Healthy Working Environment   | <b>Yes</b> |
| 8.  | Compliance with worker's minimum standard of Housing & Amenities Act 1990                      | <b>Yes</b> |
| 9.  | Availability of Complaint Platform & Grievance Mechanism                                       | <b>Yes</b> |
| 10. | CSR/Community Contribution   | <b>Yes</b> |
| 11. | Fair Pricing   | <b>Yes</b> |

#### *Disclaimers:*

*The traceability to plantation assessment is carried out through observation, documentation reviews and interview based on Mewah's Sustainable Palm Oil Policy and Mewah's Supplier Assessment Guidelines. The above findings are collected through multiple sampling methodologies during the assessment date. The information contained in this report may contain confidential, proprietary, privileged and/or private information. It is only intended for the users of Mewah Group Sustainability Dashboard.*