



PUBLIC SUMMARY REPORT
TRACEABILITY TO PLANTATION ASSESSMENT

Name of Parent Company: Chin Teck Plantations Berhad

Name of Palm Oil Mill: Keratong Estate Palm Oil Mill

Mill MPOB License No.: 500067204000

Mill Address: P.O. Box 38, 26700 Muadzam Shah, Pahang

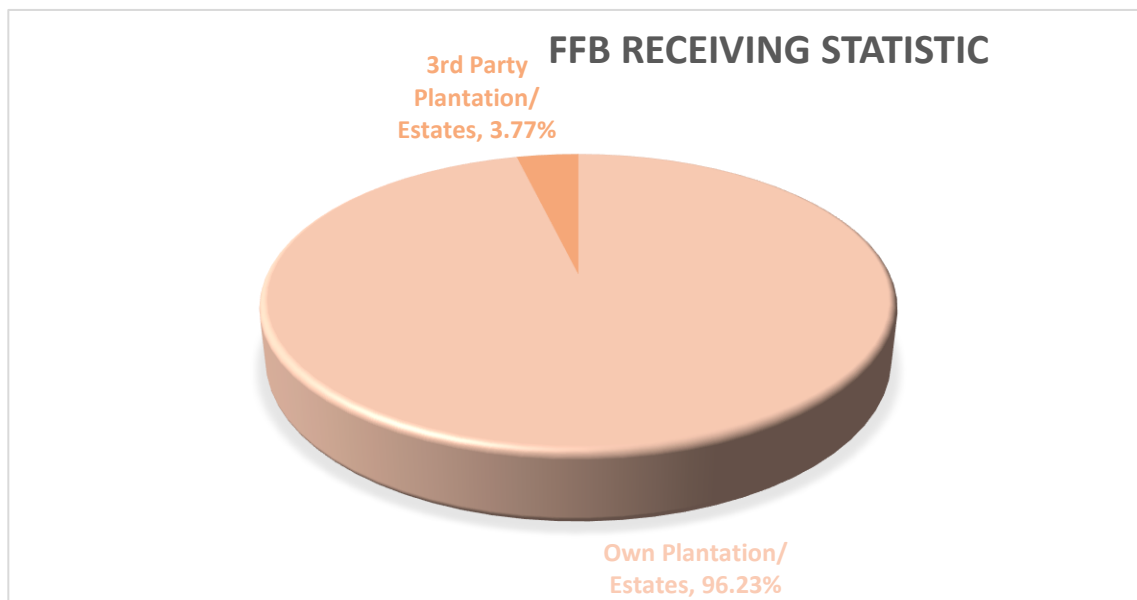
GPS Coordinate of Palm Oil Mill: 3.29491, 102.82253

Supplied Mewah's Refineries: Mewah-Oils Sdn Bhd (Port Klang),

Ngo Chew Hong Oils & Fats (M) Sdn Bhd (Semenyih)

Assessment Date: 26th September 2024 (Thursday)

A. Fresh Fruit Bunch (FFB) Traceability:



FFB Sources	TTP Score	Overall TTP Score %
Own Plantations/ Estates	100%	100%
3 rd Party Plantations/ Estates	100%	
Dealers	NA	
Smallholders	NA	

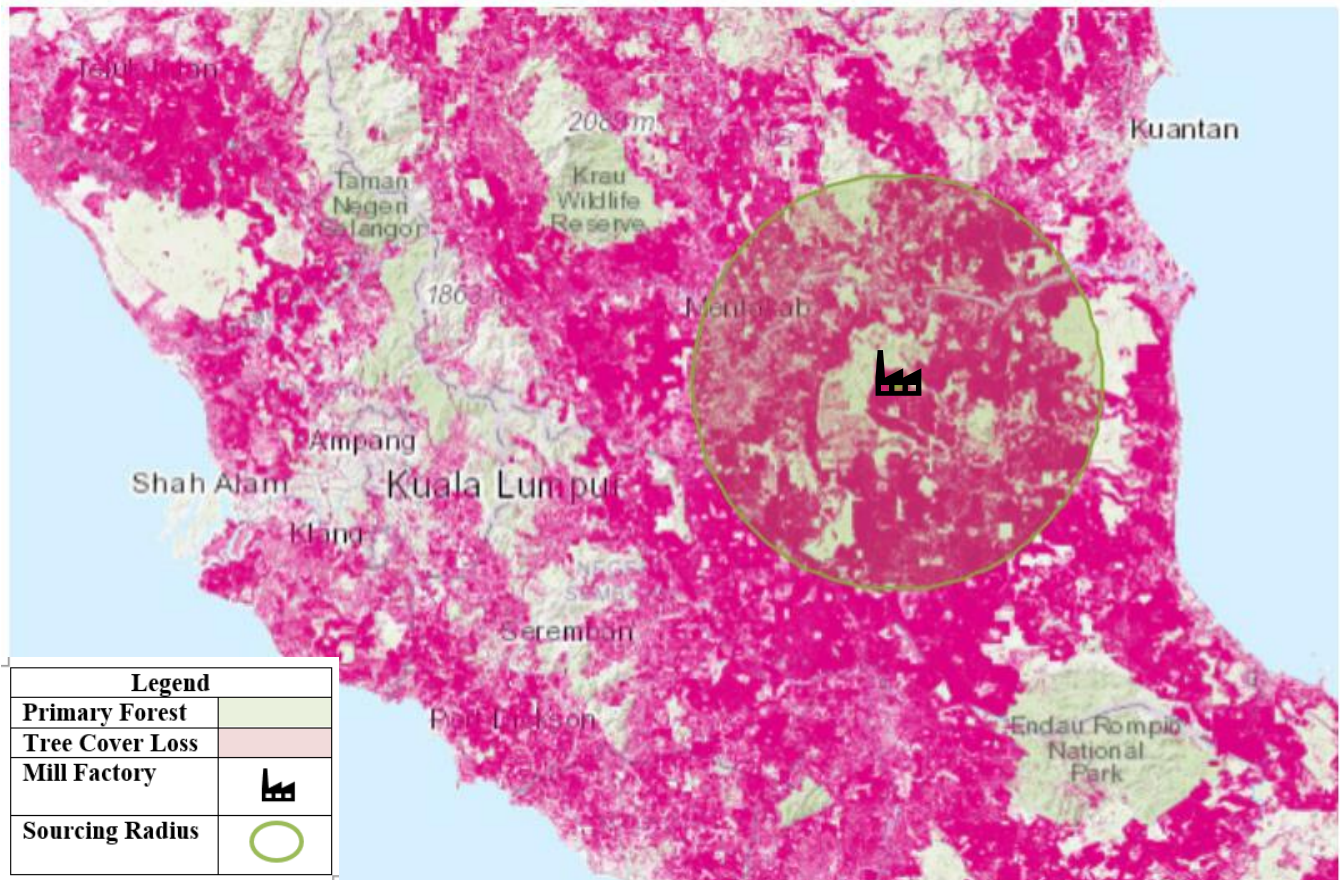
B. Environmental Risk Analysis

Assessment Date: 26th September 2024

1. Environmental risk assessment is carried out within theoretical FFB catchment area (50km radius) in Keratong Estate Palm Oil Mill.
2. The overall environmental risk ranking of Keratong Estate Palm Oil Mill is summarized as follows.

Summary	Mill Priority (Threat + Value)		Threat (Overall)			Value (Overall)																																
	Low		Low			Low																																
Forest change	<div><div></div></div>																																					
						LOSS, ALL YEARS (HA)	TREE COVER EXTENT 2000 (HA)																															
	Tree Cover Loss	60.77%				424,070	697,826																															
	Primary Forest	100.00%				92,450	0																															
	Protected Areas	41.29%				39,582	95,867																															
	Peat	44.32%				28,441	64,167																															
	Intact Forest Landscape	0.00%				0	0																															
Commodity Risk	<div><div>PALM RISK ANALYSIS</div><div><table><tr><th colspan="4">Threats</th><th colspan="3">Values</th></tr><tr><th></th><th>Deforestation</th><th>Peat</th><th>Protected Areas</th><th>Fires</th><th>Forest</th><th>Peat</th><th>Protected Areas</th></tr><tr><td>Amount</td><td>9,590ha</td><td>36,492ha</td><td>30,743ha</td><td>69/yr</td><td>148,559ha</td><td>75,685ha</td><td>97,530ha</td></tr><tr><td>Risk Level</td><td>High</td><td>Medium</td><td>High</td><td>Medium</td><td>Medium</td><td>Low</td><td>Medium</td></tr></table></div></div>							Threats				Values				Deforestation	Peat	Protected Areas	Fires	Forest	Peat	Protected Areas	Amount	9,590ha	36,492ha	30,743ha	69/yr	148,559ha	75,685ha	97,530ha	Risk Level	High	Medium	High	Medium	Medium	Low	Medium
	Threats				Values																																	
		Deforestation	Peat	Protected Areas	Fires	Forest	Peat	Protected Areas																														
	Amount	9,590ha	36,492ha	30,743ha	69/yr	148,559ha	75,685ha	97,530ha																														
Risk Level	High	Medium	High	Medium	Medium	Low	Medium																															
Mill Priority Threat Value	<div><div>MILL PRIORITY SUMMARY</div><div><div><div>KERATONG</div><div>Low</div><div>Low</div><div>Low</div></div><table><tr><th>Mill Name</th><th>Mill Priority Threat + Value</th><th>Threat Overall</th><th>Value Overall</th></tr></table><div><div>MILL PRIORITY HISTORYTHREAT + VALUE</div><div><div>High</div><div>Medium</div><div>Low</div></div><div><div>2002</div><div>'03</div><div>'04</div><div>'05</div><div>'06</div><div>'07</div><div>'08</div><div>'09</div><div>'10</div><div>'11</div><div>'12</div><div>'13</div><div>'14</div><div>'15</div><div>'16</div><div>'17</div><div>'18</div><div>'19</div><div>'20</div><div>'21</div><div>'22</div></div></div></div></div>							Mill Name	Mill Priority Threat + Value	Threat Overall	Value Overall																											
	Mill Name	Mill Priority Threat + Value	Threat Overall	Value Overall																																		

The following mapping is used as an indicator to indicate the potential environmental risks of the assessed palm oil mill.



C. Social Impact Assessment

1. Social Impact Assessment is carried out as well during the mill assessment.
2. The representatives from the mill were made to understand the important pillars of good social responsibility practices, mandatory compliance of national labour laws & human rights, and the need to improve social engagement with the local community.
3. The findings of the social impact assessment are outlines in the following table:

No.	Social Impact Assessment Criteria	Conclusion
1.	Compliance of National laws & Regulations	Yes
2.	Availability of Labour Policy	Yes
3.	Implementing Measures to Ensure the Elimination of Child and Forced Labor	Yes
4.	Availability of clearly written and understandable worker's contract for foreign guest workers	Yes
5.	Freedom of Association	Yes
6.	No exploitation of human rights of workers and local communities	Yes
7.	Safe & Healthy Working Environment	Yes
8.	Compliance with worker's minimum standard of Housing & Amenities Act 1990	Yes
9.	Availability of Complaint Platform & Grievance Mechanism	Yes
10.	CSR/Community Contribution	Yes
11.	Fair Pricing	Yes

Disclaimers:

The traceability to plantation assessment is carried out through observation, documentation reviews and interview based on Mewah's Sustainable Palm Oil Policy and Mewah's Supplier Assessment Guidelines. The above findings are collected through multiple sampling methodologies during the assessment date. The information contained in this report may contain confidential, proprietary, privileged and/or private information. It is only intended for the users of Mewah Group Sustainability Dashboard.