



PUBLIC SUMMARY REPORT

TRACEABILITY TO PLANTATION ASSESSMENT

Name of Parent Company: PH Uni Palm Sdn Bhd

Name of Palm Oil Mill: Kilang Kelapa Sawit Ledang Mas

Mill MPOB License No.: 622175004000

Mill Address: PTD 32831, Mukim Tangkak, 55200 Tangkak, Johor

GPS Coordinate of Palm Oil Mill: 2.410415, 102.667467

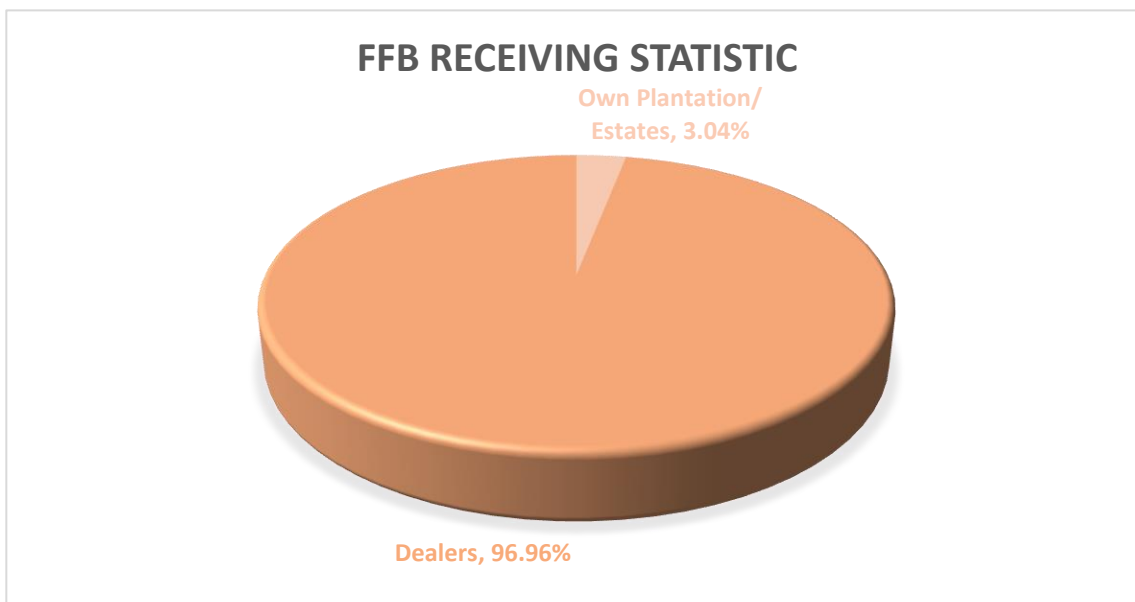
Supplied Mewah's Refineries: Mewah-Oils Sdn Bhd (Port Klang),

Ngo Chew Hong Oils & Fats (M) Sdn Bhd (Semenyih), Mewaholeo

Industries Sdn Bhd (Pasir Gudang)

Assessment Date: 15th October 2024 (Tuesday)

A. Fresh Fruit Bunch (FFB) Traceability:



FFB Sources	TTP Score	Overall TTP Score %
Own Plantations/ Estates	100%	100%
3 rd Party Plantations/ Estates	NA	
Dealers	100%	
Smallholders	NA	

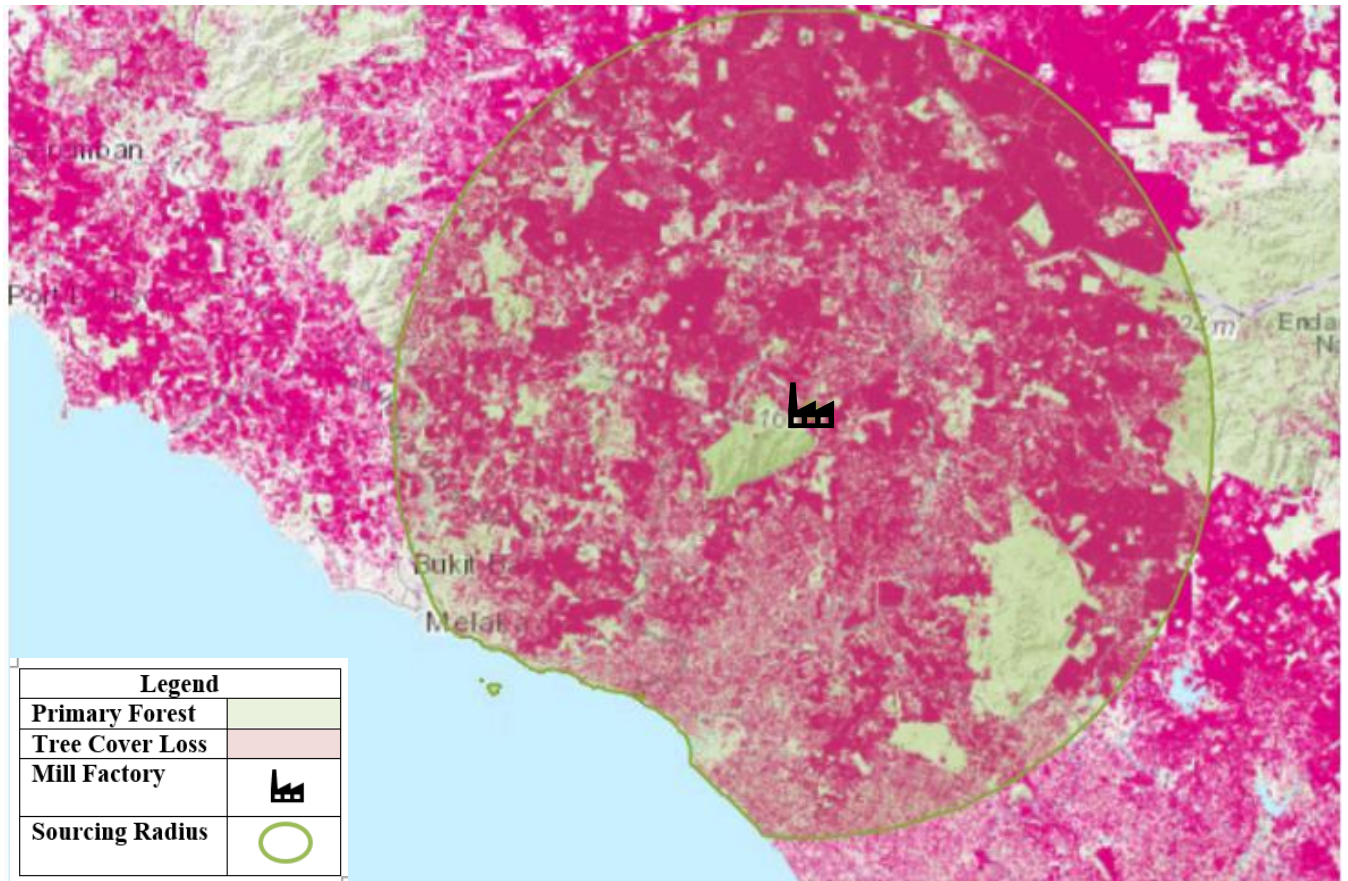
B. Environmental Risk Analysis

Assessment Date: 15th October 2024

1. Environmental risk assessment is carried out within theoretical FFB catchment area (50km radius) in Ledang Mas Palm Oil Mill.
2. The overall environmental risk ranking of Ledang Mas Palm Oil Mill is summarized as follows.

Summary	Mill Priority (Threat + Value)			Threat (Overall)						Value (Overall)																																														
	Low			Low						Low																																														
Forest change																			LOSS, ALL YEARS (HA)	TREE COVER EXTENT 2000 (HA)																																				
	Tree Cover Loss		62.74%	<div></div>												387,336	617,386																																							
	Primary Forest		19.01%	<div></div>												12,826	67,458																																							
	Protected Areas		17.84%	<div></div>												6,839	38,343																																							
	Peat		44.72%	<div></div>												22,353	49,988																																							
	Intact Forest Landscape		0.00%	<div></div>												0	0																																							
Commodity Risk	PALM RISK ANALYSIS📊																																																							
	<div><table><tr><th colspan="6">Threats</th><th colspan="3">Values</th></tr><tr><th></th><th>Deforestation</th><th>Peat</th><th>Protected Areas</th><th>Fires</th><th>Forest</th><th>Peat</th><th>Protected Areas</th></tr><tr><td>Amount</td><td>404ha</td><td>52,987ha</td><td>8,643ha</td><td>63/yr</td><td>54,020ha</td><td>62,318ha</td><td>39,469ha</td></tr><tr><td>Risk Level</td><td>Low</td><td>Medium</td><td>High</td><td>Low</td><td>Low</td><td>Low</td><td>Medium</td></tr></table></div>																			Threats						Values				Deforestation	Peat	Protected Areas	Fires	Forest	Peat	Protected Areas	Amount	404ha	52,987ha	8,643ha	63/yr	54,020ha	62,318ha	39,469ha	Risk Level	Low	Medium	High	Low	Low	Low	Medium				
Threats						Values																																																		
	Deforestation	Peat	Protected Areas	Fires	Forest	Peat	Protected Areas																																																	
Amount	404ha	52,987ha	8,643ha	63/yr	54,020ha	62,318ha	39,469ha																																																	
Risk Level	Low	Medium	High	Low	Low	Low	Medium																																																	
Mill Priority Threat Value	MILL PRIORITY SUMMARY📊																																																							
	<div><table><tr><td colspan="2">MILIK MESTIKA</td><td colspan="5">Low</td><td colspan="5">Medium</td><td colspan="7">Low</td></tr><tr><td colspan="2">Mill Name</td><td colspan="5">Mill Priority Threat + Value</td><td colspan="5">Threat Overall</td><td colspan="7">Value Overall</td></tr></table><div>MILL PRIORITY HISTORYTHREAT + VALUE<div><div>High</div><div>Medium</div><div>Low</div></div><div><div>2002</div><div>'03</div><div>'04</div><div>'05</div><div>'06</div><div>'07</div><div>'08</div><div>'09</div><div>'10</div><div>'11</div><div>'12</div><div>'13</div><div>'14</div><div>'15</div><div>'16</div><div>'17</div><div>'18</div><div>'19</div><div>'20</div><div>'21</div><div>'22</div></div></div></div>																			MILIK MESTIKA		Low					Medium					Low							Mill Name		Mill Priority Threat + Value					Threat Overall					Value Overall					
MILIK MESTIKA		Low					Medium					Low																																												
Mill Name		Mill Priority Threat + Value					Threat Overall					Value Overall																																												

The following mapping is used as an indicator to indicate the potential environmental risks of the assessed palm oil mill.



C. Social Impact Assessment

1. Social Impact Assessment is carried out as well during the mill assessment.
2. The representatives from the mill were made to understand the important pillars of good social responsibility practices, mandatory compliance of national labour laws & human rights, and the need to improve social engagement with the local community.
3. The findings of the social impact assessment are outlines in the following table:

No.	Social Impact Assessment Criteria	Conclusion
1.	Compliance of National laws & Regulations	Yes
2.	Availability of Labour Policy	Yes
3.	Implementing Measures to Ensure the Elimination of Child and Forced Labor	Yes
4.	Availability of clearly written and understandable worker's contract for foreign guest workers	Yes
5.	Freedom of Association	Yes
6.	No exploitation of human rights of workers and local communities	Yes
7.	Safe & Healthy Working Environment	Yes
8.	Compliance with worker's minimum standard of Housing & Amenities Act 1990	Yes
9.	Availability of Complaint Platform & Grievance Mechanism	Yes
10.	CSR/Community Contribution	Yes
11.	Fair Pricing	Yes

Disclaimers:

The traceability to plantation assessment is carried out through observation, documentation reviews and interview based on Mewah's Sustainable Palm Oil Policy and Mewah's Supplier Assessment Guidelines. The above findings are collected through multiple sampling methodologies during the assessment date. The information contained in this report may contain confidential, proprietary, privileged and/or private information. It is only intended for the users of Mewah Group Sustainability Dashboard.