



PUBLIC SUMMARY REPORT
TRACEABILITY TO PLANTATION ASSESSMENT

Name of Parent Company: Ikhasas Sdn Bhd

Name of Palm Oil Mill: Liquid Palm Oil Mill

Mill MPOB License No.: 620227002000

Mill Address: Ladang Kuala Betis, 18300 Gua Musang, Kelantan, Malaysia

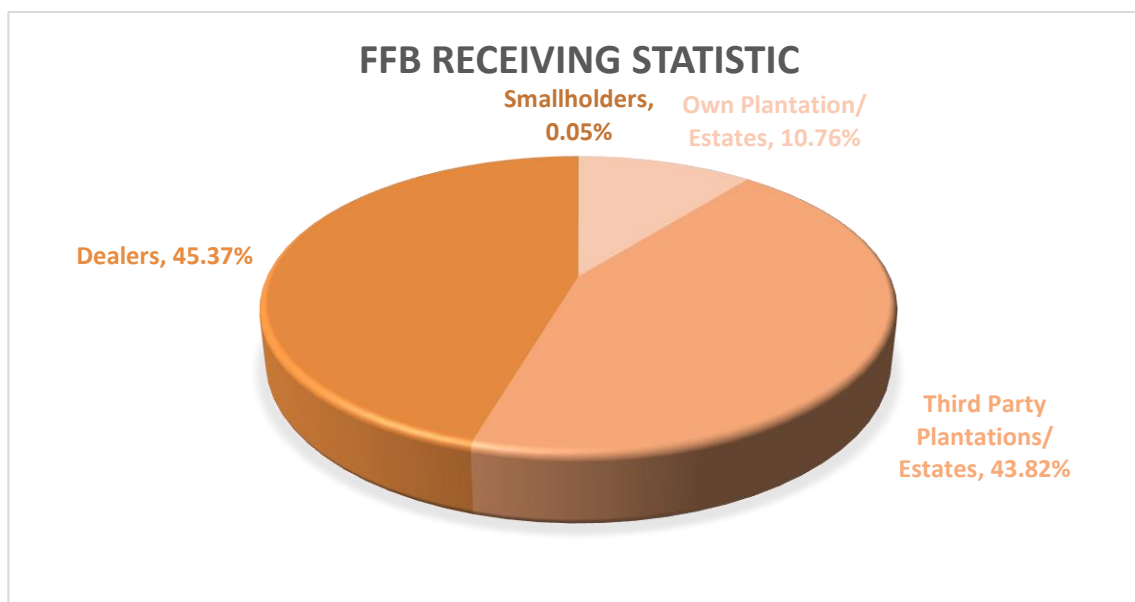
GPS Coordinate of Palm Oil Mill: 4.873740, 101.805427

Supplied Mewah's Refineries: Mewah-Oils Sdn Bhd (Port Klang),

Ngo Chew Hong Oils & Fats (M) Sdn Bhd (Semenyih)

Assessment Date: 26th June 2024 (Wednesday)

A. Fresh Fruit Bunch (FFB) Traceability:



FFB Sources	TTP Score	Overall TTP Score %
Own Plantations/ Estates	100%	100%
3 rd Party Plantations/ Estates	100%	
Dealers	100%	
Smallholders	100%	

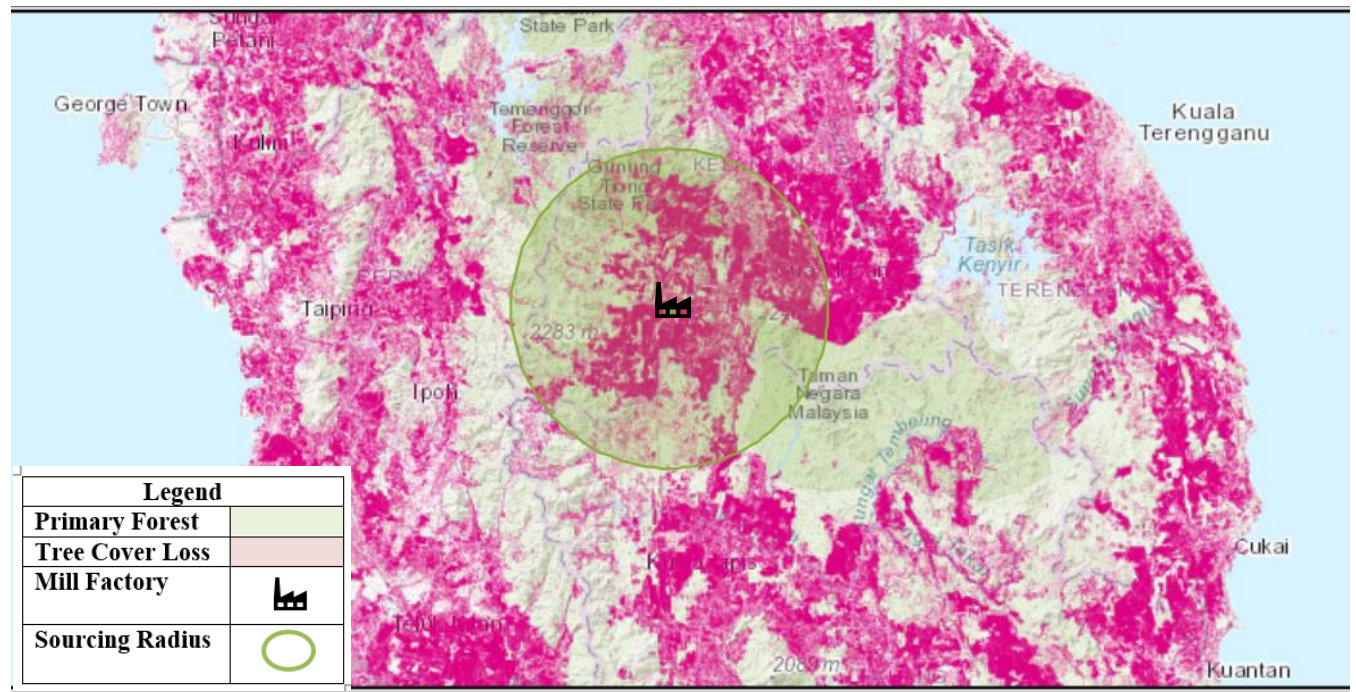
B. Environmental Risk Analysis

Assessment Date: 26th June 2024

1. Environmental risk assessment is carried out within theoretical FFB catchment area (50km radius) in Liquid Palm Oil Mill.
2. The overall environmental risk ranking of Liquid Palm Oil Mill is summarized as follows.

Summary	Mill Priority (Threat + Value)			Threat (Overall)			Value (Overall)																									
	Low			Low			Low																									
Forest change	<div><div></div><div>LOSS, ALL YEARS (HA)</div><div>TREE COVER EXTENT 2000 (HA)</div></div>																															
	Tree Cover Loss	28.57%	<div></div>				217,513	761,356																								
	Primary Forest	100.00%	<div></div>				102,226	0																								
	Protected Areas	1.25%	<div></div>				1,175	93,821																								
	Peat	12.59%	<div></div>				771	6,123																								
	Intact Forest Landscape	1.01%	<div></div>				936	92,568																								
Commodity Risk	PALM RISK ANALYSIS ⓘ																															
	<div><div><div>Threats</div><div>Values</div></div><table><tr><td></td><td>Deforestation</td><td>Peat</td><td>Protected Areas</td><td>Fires</td><td>Forest</td><td>Peat</td><td>Protected Areas</td></tr><tr><td>Amount</td><td>8,401ha</td><td>753ha</td><td>854ha</td><td>12 /yr</td><td>391,789ha</td><td>6,414ha</td><td>94,003ha</td></tr><tr><td>Risk Level</td><td>High</td><td>Low</td><td>Low</td><td>Low</td><td>High</td><td>Low</td><td>Medium</td></tr></table></div>										Deforestation	Peat	Protected Areas	Fires	Forest	Peat	Protected Areas	Amount	8,401ha	753ha	854ha	12 /yr	391,789ha	6,414ha	94,003ha	Risk Level	High	Low	Low	Low	High	Low
	Deforestation	Peat	Protected Areas	Fires	Forest	Peat	Protected Areas																									
Amount	8,401ha	753ha	854ha	12 /yr	391,789ha	6,414ha	94,003ha																									
Risk Level	High	Low	Low	Low	High	Low	Medium																									
Mill Priority Threat Value	MILL PRIORITY SUMMARY ⓘ																															
	<div><div><div>LIZIZ</div><div>Low</div><div>Low</div><div>Low</div></div><table><tr><td>Mill Name</td><td>Mill Priority Threat + Value</td><td>Threat Overall</td><td>Value Overall</td></tr></table><div><div>MILL PRIORITY HISTORYTHREAT + VALUE</div><div><div>High</div><div>Medi</div><div>Low</div></div><div><div>2002</div><div>'03</div><div>'04</div><div>'05</div><div>'06</div><div>'07</div><div>'08</div><div>'09</div><div>'10</div><div>'11</div><div>'12</div><div>'13</div><div>'14</div><div>'15</div><div>'16</div><div>'17</div><div>'18</div><div>'19</div><div>'20</div><div>'21</div><div>'22</div></div></div></div>									Mill Name	Mill Priority Threat + Value	Threat Overall	Value Overall																			
Mill Name	Mill Priority Threat + Value	Threat Overall	Value Overall																													

The following mapping is used as an indicator to indicate the potential environmental risks of the assessed palm oil mill.



C. Social Impact Assessment

1. Social Impact Assessment is carried out as well during the mill assessment.
2. The representatives from the mill were made to understand the important pillars of good social responsibility practices, mandatory compliance of national labour laws & human rights, and the need to improve social engagement with the local community.
3. The findings of the social impact assessment are outlines in the following table:

No.	Social Impact Assessment Criteria	Conclusion
1.	Compliance of National laws & Regulations	Yes
2.	Availability of Labour Policy	Yes
3.	Implementing Measures to Ensure the Elimination of Child and Forced Labor	Yes
4.	Availability of clearly written and understandable worker's contract for foreign guest workers	Yes
5.	Freedom of Association	Yes
6.	No exploitation of human rights of workers and local communities	Yes
7.	Safe & Healthy Working Environment	Yes
8.	Compliance with worker's minimum standard of Housing & Amenities Act 1990	Yes
9.	Availability of Complaint Platform & Grievance Mechanism	Yes
10.	CSR/Community Contribution	Yes
11.	Fair Pricing	Yes

Disclaimers:

The traceability to plantation assessment is carried out through observation, documentation reviews and interview based on Mewah's Sustainable Palm Oil Policy and Mewah's Supplier Assessment Guidelines. The above findings are collected through multiple sampling methodologies during the assessment date. The information contained in this report may contain confidential, proprietary, privileged and/or private information. It is only intended for the users of Mewah Group Sustainability Dashboard.