



PUBLIC SUMMARY REPORT

TRACEABILITY TO PLANTATION ASSESSMENT

Name of Parent Company: Boustead Plantations Berhad

Name of Palm Oil Mill: Telok Sengat Palm Oil Mill

Mill MPOB License No.: 500089304000

Mill Address: PO Box 513, 81909 Kota Tinggi, Johor

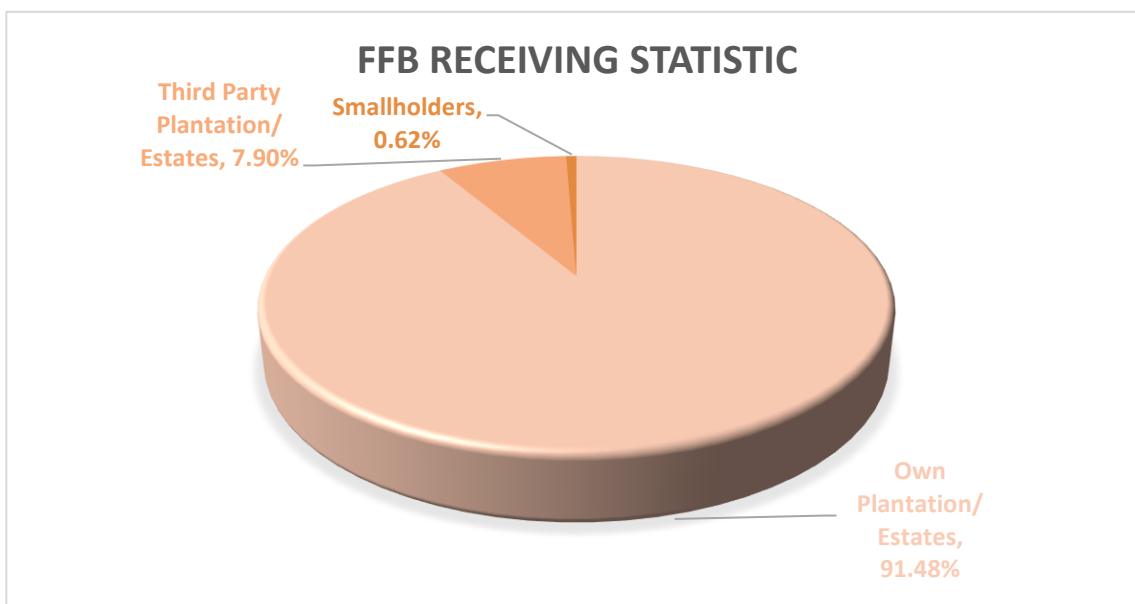
GPS Coordinate of Palm Oil Mill: 1.56798, 104.04372

Supplied Mewah's Refineries: Mewaholeo Industries Sdn Bhd

(Pasir Gudang) & Mewah Oils Sdn Bhd (Port Klang)

Assessment Date: 17th January 2025 (Friday)

A. Fresh Fruit Bunch (FFB) Traceability:



FFB Sources	TTP Score	Overall TTP Score %
Own Plantations/ Estates	100%	100%
3 rd Party Plantations/ Estates	100%	
Dealers	NA	
Smallholders	100%	



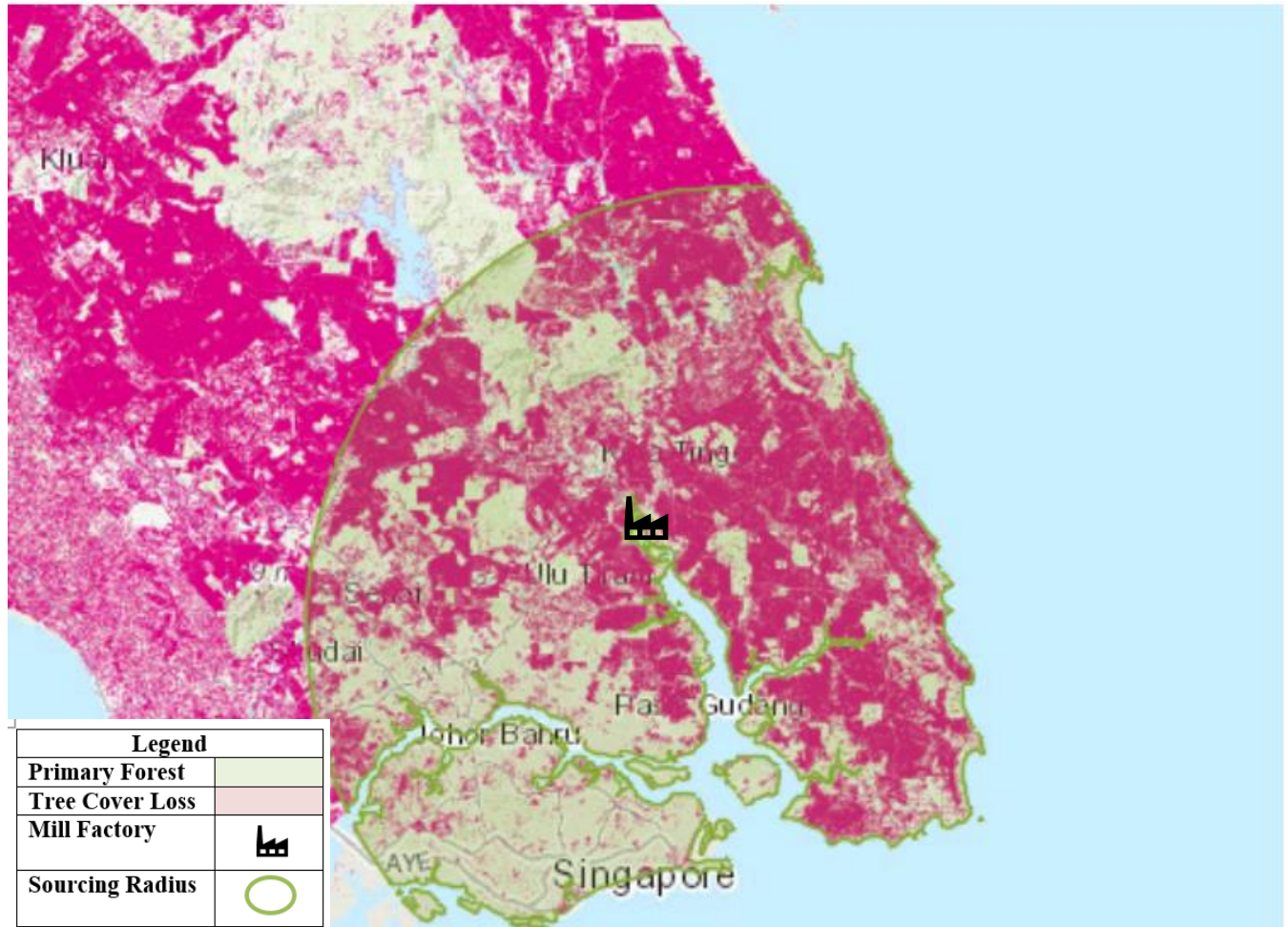
B. Environmental Risk Analysis

Assessment Date: 17th January 2025

1. Environmental risk assessment is carried out within theoretical FFB catchment area (50km radius) in Telok Sengat Palm Oil Mill.
2. The overall environmental risk ranking of Telok Sengat Palm Oil Mill is summarized as follows.

Summary	Mill Priority (Threat + Value)		Threat (Overall)				Value (Overall)						
	Low		Low				Low						
Forest change	<div><div></div><div>LOSS, ALL YEARS (HA)</div><div>TREE COVER EXTENT 2000 (HA)</div></div>												
	Tree Cover Loss	56.55%					175,001	309,465					
	Primary Forest	100.00%					4,770	0					
	Protected Areas	12.90%					1,210	9,378					
	Peat	47.15%					25,492	54,070					
	Intact Forest Landscape	0.00%					0	0					
Commodity Risk	PALM RISK ANALYSIS												
	<div><div>Threats</div><div>Values</div></div>												
	Deforestation	Peat	Protected Areas	Fires	Forest	Peat	Protected Areas						
	Amount	110ha	42,155ha	579ha	107/yr	29,291ha	72,152ha	10,276ha					
	Risk Level	Low	Medium	Low	High	Low	Medium	Low					
Mill Priority Threat Value	MILL PRIORITY SUMMARY												
	<div><div>TELOK SENGAT</div><div>Low</div><div>Low</div><div>Low</div></div>												
	Mill Name	Mill Priority Threat + Value				Threat Overall				Value Overall			
	MILL PRIORITY HISTORYTHREAT + VALUE												
	<div><div>High</div><div>Medium</div><div>Low</div></div>												
	<div><div>2002</div><div>'03</div><div>'04</div><div>'05</div><div>'06</div><div>'07</div><div>'08</div><div>'09</div><div>'10</div><div>'11</div><div>'12</div><div>'13</div><div>'14</div><div>'15</div><div>'16</div><div>'17</div><div>'18</div><div>'19</div><div>'20</div><div>'21</div><div>'22</div></div>												

The following mapping is used as an indicator to indicate the potential environmental risks of the assessed palm oil mill.



C. Social Impact Assessment

1. Social Impact Assessment is carried out as well during the mill assessment.
2. The representatives from the mill were made to understand the important pillars of good social responsibility practices, mandatory compliance of national labour laws & human rights, and the need to improve social engagement with the local community.
3. The findings of the social impact assessment are outlines in the following table:

No.	Social Impact Assessment Criteria	Conclusion
1.	Compliance of National laws & Regulations	Yes
2.	Availability of Labour Policy	Yes
3.	Implementing Measures to Ensure the Elimination of Child and Forced Labor	Yes
4.	Availability of clearly written and understandable worker's contract for foreign guest workers	Yes
5.	Freedom of Association	Yes
6.	No exploitation of human rights of workers and local communities	Yes
7.	Safe & Healthy Working Environment	Yes
8.	Compliance with worker's minimum standard of Housing & Amenities Act 1990	Yes
9.	Availability of Complaint Platform & Grievance Mechanism	Yes
10.	CSR/Community Contribution	Yes
11.	Fair Pricing	Yes

Disclaimers:

The traceability to plantation assessment is carried out through observation, documentation reviews and interview based on Mewah's Sustainable Palm Oil Policy and Mewah's Supplier Assessment Guidelines. The above findings are collected through multiple sampling methodologies during the assessment date. The information contained in this report may contain confidential, proprietary, privileged and/or private information. It is only intended for the users of Mewah Group Sustainability Dashboard.