



PUBLIC SUMMARY REPORT

TRACEABILITY TO PLANTATION ASSESSMENT

Name of Parent Company: Tian Siang Holding Sdn Bhd

Name of Palm Oil Mill: Tian Siang Oil Mill Perak

Mill MPOB License No.: 500251904000

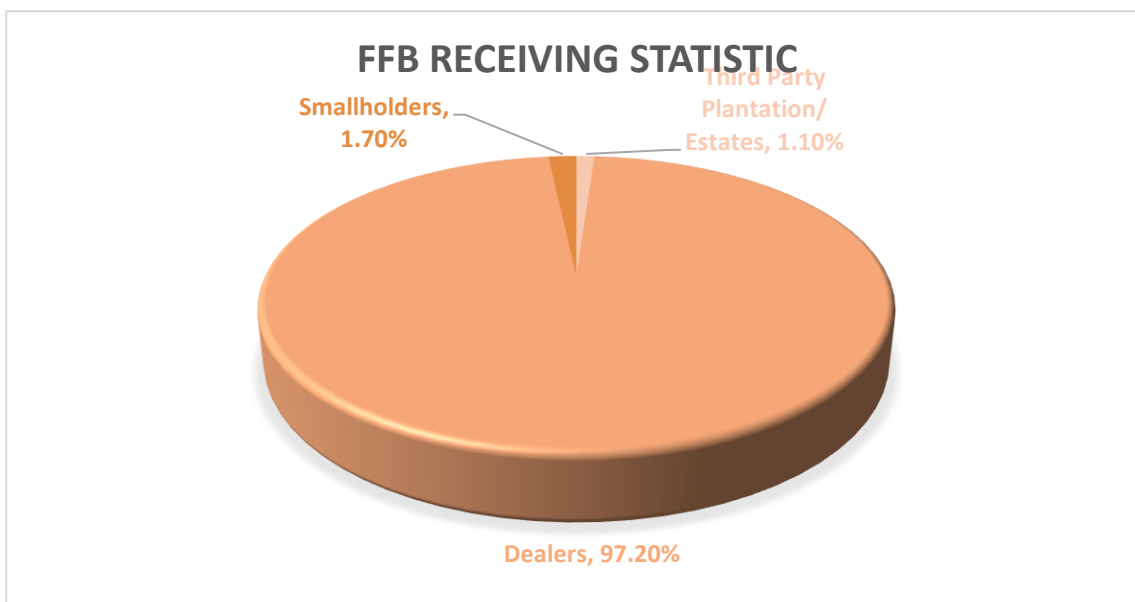
Mill Address: Lot 2161-2162, Batu 21, Jalan Taiping Kg Beruas, 34800 Padang Gajah, Trong, Perak

GPS Coordinate of Palm Oil Mill: 4.5934, 100.7307

Supplied Mewah's Refineries: Mewah Oils Sdn Bhd (Port Klang)

Assessment Date: 18th December 2024 (Wednesday)

A. Fresh Fruit Bunch (FFB) Traceability:



FFB Sources	TTP Score	Overall TTP Score %
Own Plantations/ Estates	NA	100%
3 rd Party Plantations/ Estates	100%	
Dealers	100%	
Smallholders	100%	

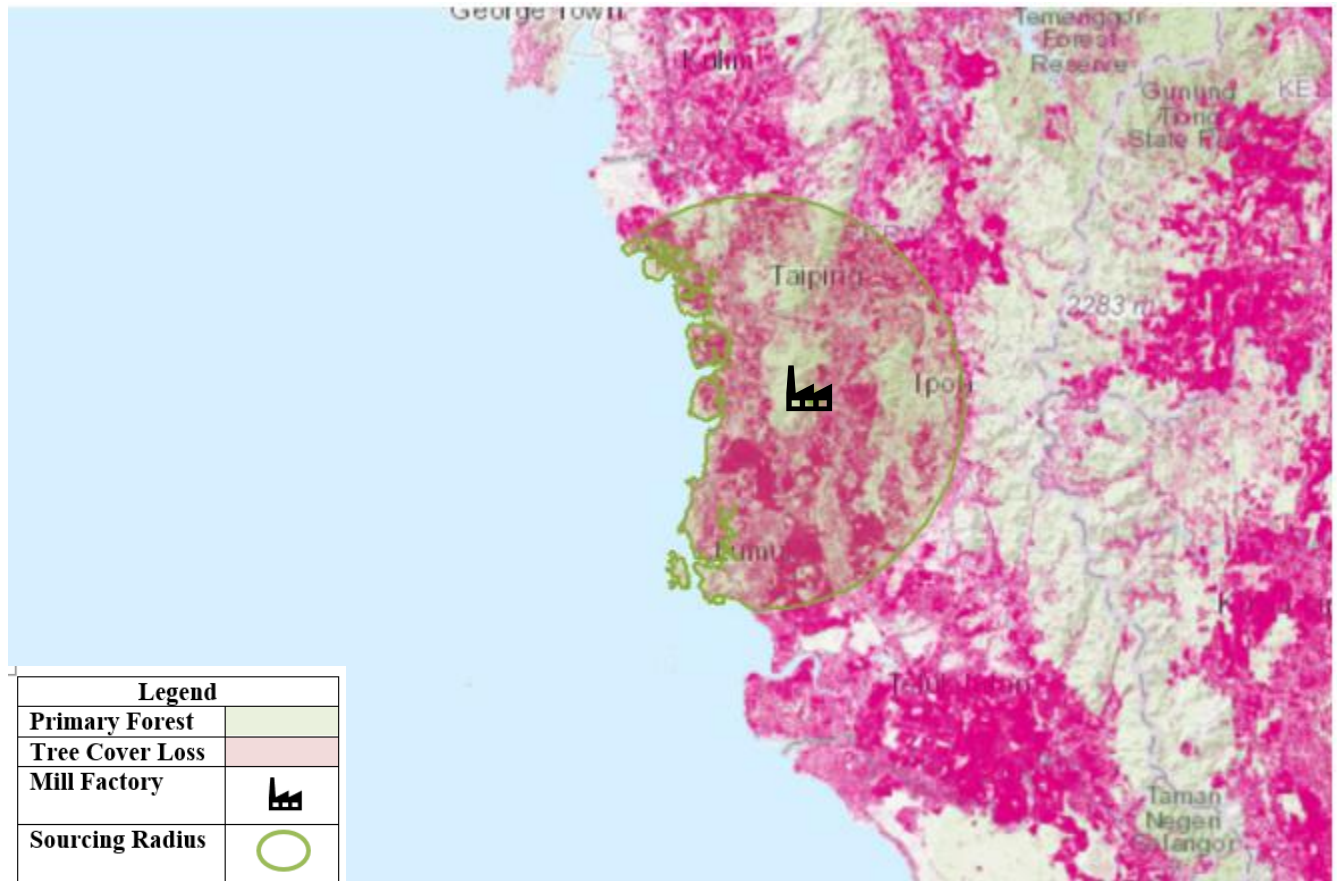
B. Environmental Risk Analysis

Assessment Date: 18th December 2024

1. Environmental risk assessment is carried out within theoretical FFB catchment area (50km radius) in Tian Siang Oil Mill Perak
2. The overall environmental risk ranking of Tian Siang Oil Mill Perak is summarized as follows.

Summary	Mill Priority (Threat + Value)	Threat (Overall)		Value (Overall)																															
	Low	Low		Low																															
Forest change	<div><div></div><div>LOSS, ALL YEARS (HA)</div><div>TREE COVER EXTENT 2000 (HA)</div></div> <table><tr><td>Tree Cover Loss</td><td>38.30%</td><td><div></div></td><td>158,696</td><td>414,304</td></tr><tr><td>Primary Forest</td><td>100.00%</td><td><div></div></td><td>22,865</td><td>0</td></tr><tr><td>Protected Areas</td><td>1.95%</td><td><div></div></td><td>273</td><td>13,990</td></tr><tr><td>Peat</td><td>50.12%</td><td><div></div></td><td>49,597</td><td>98,956</td></tr><tr><td>Intact Forest Landscape</td><td>0.00%</td><td><div></div></td><td>0</td><td>0</td></tr></table>					Tree Cover Loss	38.30%	<div></div>	158,696	414,304	Primary Forest	100.00%	<div></div>	22,865	0	Protected Areas	1.95%	<div></div>	273	13,990	Peat	50.12%	<div></div>	49,597	98,956	Intact Forest Landscape	0.00%	<div></div>	0	0					
	Tree Cover Loss	38.30%	<div></div>	158,696	414,304																														
	Primary Forest	100.00%	<div></div>	22,865	0																														
	Protected Areas	1.95%	<div></div>	273	13,990																														
	Peat	50.12%	<div></div>	49,597	98,956																														
	Intact Forest Landscape	0.00%	<div></div>	0	0																														
	Commodity Risk	<div>PALM RISK ANALYSIS</div> <table><tr><th colspan="4">Threats</th><th colspan="3">Values</th></tr><tr><th>Deforestation</th><th>Peat</th><th>Protected Areas</th><th>Fires</th><th>Forest</th><th>Peat</th><th>Protected Areas</th></tr><tr><td>Amount</td><td>2,055ha</td><td>86,434ha</td><td>120ha</td><td>70/yr</td><td>106,477ha</td><td>131,806ha</td><td>14,250ha</td></tr><tr><td>Risk Level</td><td>Medium</td><td>High</td><td>Low</td><td>High</td><td>Medium</td><td>High</td><td>Low</td></tr></table>					Threats				Values			Deforestation	Peat	Protected Areas	Fires	Forest	Peat	Protected Areas	Amount	2,055ha	86,434ha	120ha	70/yr	106,477ha	131,806ha	14,250ha	Risk Level	Medium	High	Low	High	Medium	High
Threats				Values																															
Deforestation	Peat	Protected Areas	Fires	Forest	Peat	Protected Areas																													
Amount	2,055ha	86,434ha	120ha	70/yr	106,477ha	131,806ha	14,250ha																												
Risk Level	Medium	High	Low	High	Medium	High	Low																												
Mill Priority Threat Value	<div>MILL PRIORITY SUMMARY</div> <div><div>TIAN SIANG PERAK</div><div>Low</div><div>Low</div><div>Low</div></div> <table><tr><th>Mill Name</th><th>Mill Priority Threat + Value</th><th>Threat Overall</th><th>Value Overall</th></tr></table> <div>MILL PRIORITY HISTORYTHREAT + VALUE</div> <div><div>High</div><div>Medium</div><div>Low</div></div> <div><div>2002</div><div>'03</div><div>'04</div><div>'05</div><div>'06</div><div>'07</div><div>'08</div><div>'09</div><div>'10</div><div>'11</div><div>'12</div><div>'13</div><div>'14</div><div>'15</div><div>'16</div><div>'17</div><div>'18</div><div>'19</div><div>'20</div><div>'21</div><div>'22</div></div>					Mill Name	Mill Priority Threat + Value	Threat Overall	Value Overall																										
	Mill Name	Mill Priority Threat + Value	Threat Overall	Value Overall																															

The following mapping is used as an indicator to indicate the potential environmental risks of the assessed palm oil mill.



C. Social Impact Assessment

1. Social Impact Assessment is carried out as well during the mill assessment.
2. The representatives from the mill were made to understand the important pillars of good social responsibility practices, mandatory compliance of national labour laws & human rights, and the need to improve social engagement with the local community.
3. The findings of the social impact assessment are outlines in the following table:

No.	Social Impact Assessment Criteria	Conclusion
1.	Compliance of National laws & Regulations	Yes
2.	Availability of Labour Policy	Yes
3.	Implementing Measures to Ensure the Elimination of Child and Forced Labor	Yes
4.	Availability of clearly written and understandable worker's contract for foreign guest workers	Yes
5.	Freedom of Association	Yes
6.	No exploitation of human rights of workers and local communities	Yes
7.	Safe & Healthy Working Environment	Yes
8.	Compliance with worker's minimum standard of Housing & Amenities Act 1990	Yes
9.	Availability of Complaint Platform & Grievance Mechanism	Yes
10.	CSR/Community Contribution	Yes
11.	Fair Pricing	Yes

Disclaimers:

The traceability to plantation assessment is carried out through observation, documentation reviews and interview based on Mewah's Sustainable Palm Oil Policy and Mewah's Supplier Assessment Guidelines. The above findings are collected through multiple sampling methodologies during the assessment date. The information contained in this report may contain confidential, proprietary, privileged and/or private information. It is only intended for the users of Mewah Group Sustainability Dashboard.