



PUBLIC SUMMARY REPORT

TRACEABILITY TO PLANTATION ASSESSMENT

Name of Parent Company: Boustead Plantations Berhad

Name of Palm Oil Mill: Trong Palm Oil Mill

Mill MPOB License No.: 616102004000

Mill Address: Locked Rag No 3.34800, Trong, Perak

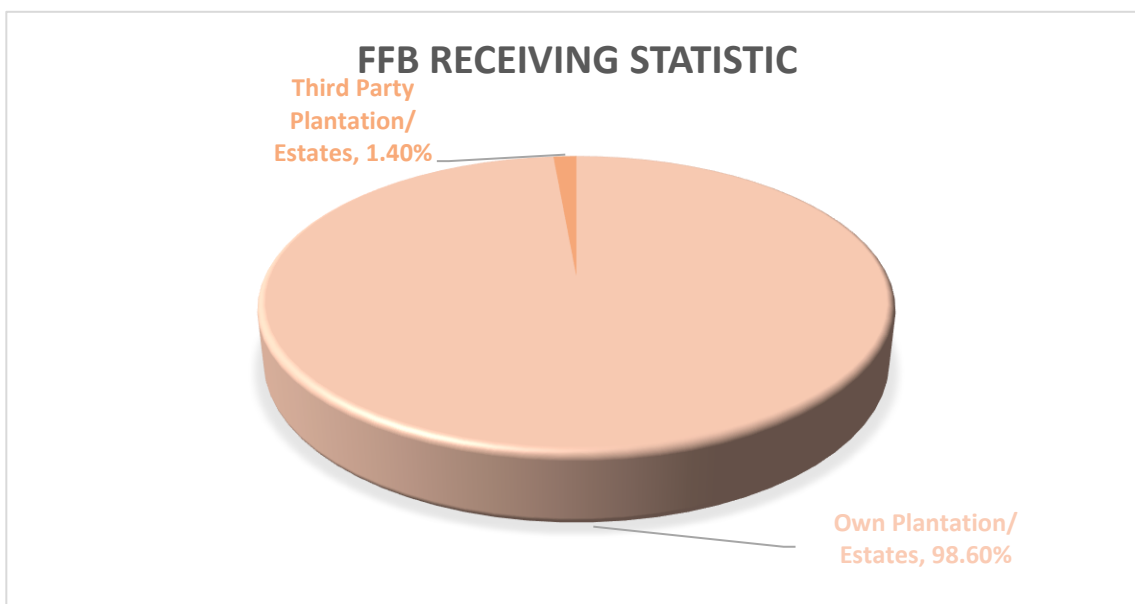
GPS Coordinate of Palm Oil Mill: 4.6741, 100.7071

Supplied Mewah's Refineries: Mewah Oils Sdn Bhd (Port Klang),

Ngo Chew Hong Oils & Fats Sdn Bhd (Semenyih)

Assessment Date: 19th December 2024 (Thursday)

A. Fresh Fruit Bunch (FFB) Traceability:



FFB Sources	TTP Score	Overall TTP Score %
Own Plantations/ Estates	100%	100%
3 rd Party Plantations/ Estates	100%	
Dealers	NA	
Smallholders	NA	

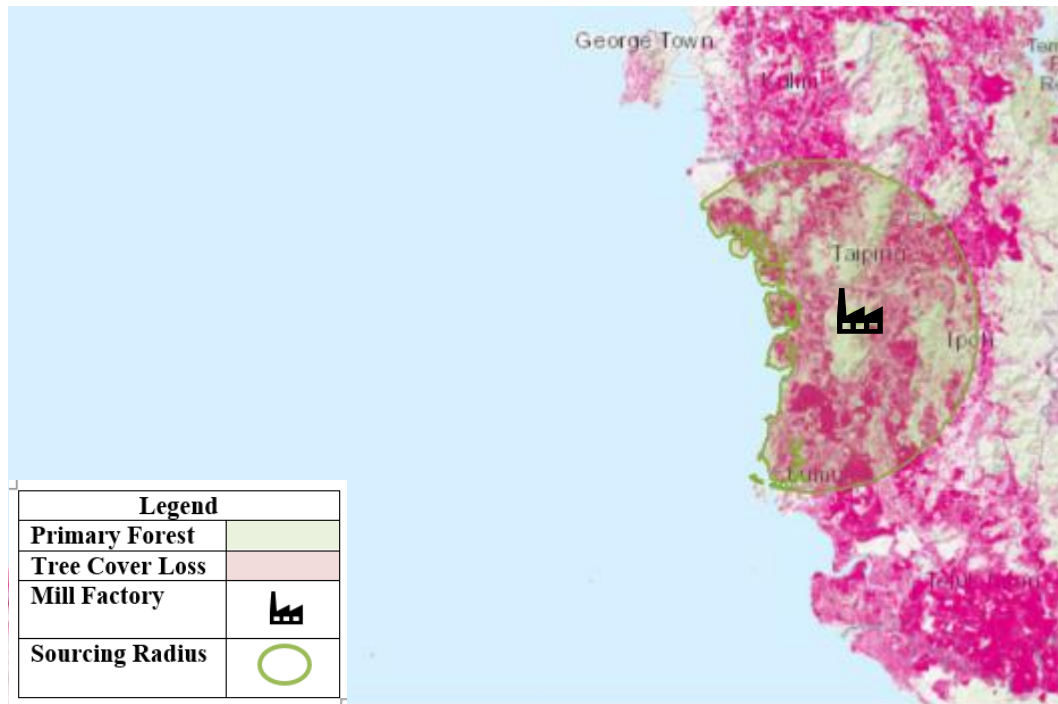
B. Environmental Risk Analysis

Assessment Date: 19th December 2024

1. Environmental risk assessment is carried out within theoretical FFB catchment area (50km radius) in Trong Palm Oil Mill.
2. The overall environmental risk ranking of Trong Palm Oil Mill is summarized as follows.

Summary	Mill Priority (Threat + Value)		Threat (Overall)		Value (Overall)																								
	Low		Low		Low																								
Forest change	<div>LOSS, ALL YEARS (HA)</div> <div>TREE COVER EXTENT 2000 (HA)</div>																												
	Tree Cover Loss	37.12%	<div></div>	156,921	422,745																								
	Primary Forest	15.72%	<div></div>	23,442	149,114																								
	Protected Areas	2.40%	<div></div>	343	14,297																								
	Peat	48.28%	<div></div>	46,369	96,045																								
	Intact Forest Landscape	0.00%	<div></div>	0	0																								
Commodity Risk	PALM RISK ANALYSIS ⓘ																												
	<div><div>Threats</div><div>Values</div><table><tr><td></td><td>Deforestation</td><td>Peat</td><td>Protected Areas</td><td>Fires</td><td>Forest</td><td>Peat</td><td>Protected Areas</td></tr><tr><td>Amount</td><td>2,033ha</td><td>81,404ha</td><td>121ha</td><td>64/yr</td><td>115,093ha</td><td>125,278ha</td><td>14,524ha</td></tr><tr><td>Risk Level</td><td>Medium</td><td>High</td><td>Low</td><td>Medium</td><td>Medium</td><td>Medium</td><td>Low</td></tr></table></div>							Deforestation	Peat	Protected Areas	Fires	Forest	Peat	Protected Areas	Amount	2,033ha	81,404ha	121ha	64/yr	115,093ha	125,278ha	14,524ha	Risk Level	Medium	High	Low	Medium	Medium	Medium
	Deforestation	Peat	Protected Areas	Fires	Forest	Peat	Protected Areas																						
Amount	2,033ha	81,404ha	121ha	64/yr	115,093ha	125,278ha	14,524ha																						
Risk Level	Medium	High	Low	Medium	Medium	Medium	Low																						
Mill Priority Threat Value	MILL PRIORITY SUMMARY ⓘ																												
	<div><div>TRONG OIL MILL</div><div>Low</div><div>Medium</div><div>Low</div></div> <table><tr><td>Mill Name</td><td>Mill Priority Threat + Value</td><td>Threat Overall</td><td>Value Overall</td></tr></table> <div><div>MILL PRIORITY HISTORYTHREAT + VALUE</div><div>High</div><div>Medium</div><div>Low</div><div><div>2002</div><div>'03</div><div>'04</div><div>'05</div><div>'06</div><div>'07</div><div>'08</div><div>'09</div><div>'10</div><div>'11</div><div>'12</div><div>'13</div><div>'14</div><div>'15</div><div>'16</div><div>'17</div><div>'18</div><div>'19</div><div>'20</div><div>'21</div><div>'22</div></div></div>						Mill Name	Mill Priority Threat + Value	Threat Overall	Value Overall																			
Mill Name	Mill Priority Threat + Value	Threat Overall	Value Overall																										

The following mapping is used as an indicator to indicate the potential environmental risks of the assessed palm oil mill.



C. Social Impact Assessment

1. Social Impact Assessment is carried out as well during the mill assessment.
2. The representatives from the mill were made to understand the important pillars of good social responsibility practices, mandatory compliance of national labour laws & human rights, and the need to improve social engagement with the local community.
3. The findings of the social impact assessment are outlines in the following table:

No.	Social Impact Assessment Criteria	Conclusion
1.	Compliance of National laws & Regulations	Yes
2.	Availability of Labour Policy	Yes
3.	Implementing Measures to Ensure the Elimination of Child and Forced Labor	Yes
4.	Availability of clearly written and understandable worker's contract for foreign guest workers	Yes
5.	Freedom of Association	Yes
6.	No exploitation of human rights of workers and local communities	Yes
7.	Safe & Healthy Working Environment	Yes
8.	Compliance with worker's minimum standard of Housing & Amenities Act 1990	Yes
9.	Availability of Complaint Platform & Grievance Mechanism	Yes
10.	CSR/Community Contribution	Yes
11.	Fair Pricing	Yes

Disclaimers:

The traceability to plantation assessment is carried out through observation, documentation reviews and interview based on Mewah's Sustainable Palm Oil Policy and Mewah's Supplier Assessment Guidelines. The above findings are collected through multiple sampling methodologies during the assessment date. The information contained in this report may contain confidential, proprietary, privileged and/or private information. It is only intended for the users of Mewah Group Sustainability Dashboard.